

THE VOCATIONAL EXPERT



Spring 2003

Volume 20, No. 1

Official Publication of the
American Board of
Vocational Experts

ABVE FALL CONFERENCE 2003

OCTOBER 9-12, 2003

ST. THOMAS, U.S. VIRGIN ISLANDS

RENAISSANCE GRAND BEACH RESORT

Vocational Assessment: Liabilities & Possibilities

Donald Jennings and I want to welcome you to a tropical paradise, where you will enjoy your learning experience at the upcoming ABVE Conference, from October 9, 2003 through October 12, 2003.

The conference committee has developed a program, which deals with issues of assessments, ranging from determining liability issues and assessing work-related functions, through functional capacity evaluations. Speakers will consider the validity and reliability of such evaluations, looking at return-to-work programs, assessing economic damages (attempting to predict future vocational status of adults with disabilities), assessing the return to work of the injured athlete, and finally assessing spousal capacity to perform work and related issues in divorce cases.

We have selected as the location for our conference, the Renaissance Grand Beach Resort located on the east end of St. Thomas, with a magnificent view of St. John and the British Virgin Islands. This resort is located on 34 acres, surrounding a 1000-foot white sandy beach, offering two freshwater pools, a fitness center, a full line of spa services, and access to unlimited water sports, including free scuba lessons and snorkeling equipment. The hotel offers two fine restaurants, and a great breakfast buffet. This is a very family-friendly hotel, and children can find lots to do having fun in the sun.

St. Thomas offers thousands of stores for duty-free shopping, offering tremendous savings on jewelry, clothing, liquor and various other items. The Indra House in International Plaza is a fine place to start your shopping adventure. If Bhavna doesn't have what you're looking for, she'll know exactly where on the Island you can find the best deals for whatever it is.

It is recommended, that you use public taxi transportation, or hotel shuttles for your trips into the shopping area, or out to dinner. Driving on St. Thomas is on the opposite side of the road, and the terrain can be very hilly and winding. Libations are plentiful, and safety is an important issue.

Dress is very casual (no place for ties and jackets); bring your passport (or picture I.D. and birth certificate), bathing suit, sunscreen, and a thirst for adventure, when you enjoy Capt. Glen Davis and his very smooth-sailing vessels, a 42' Catamaran and a 40' Trimaran. Day trips and half-day trips can be arranged to St. John, and into the British Virgin Islands, including Yost Van Dyke.

One other important thing to note - the pace on-Island is not the same as in your own busy cities. Be prepared to slow down and relax. Our learning experience with the speakers will end everyday at noon so that you will be able to have the afternoon to explore and have fun. Watch for your conference brochure soon, which will highlight all the wonderful speakers.

Paul R. Blatchford and Donald Jennings
Co-chairs, ABVE Fall 2003 Conference

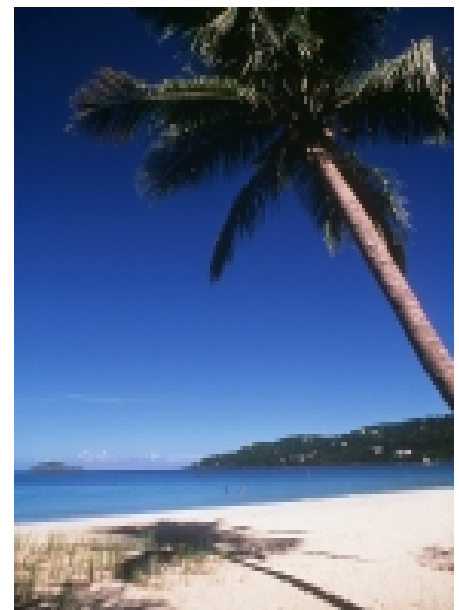
DON'T DELAY—REGISTER TODAY.
THE HOTEL CUT OFF DATE IS
SEPTEMBER 8, 2003

Hotel Rate: \$110 Single/Double

Reservation Number 1-888-314-3514

Inside

President's Message	2
New Members	2
Letter From the Editor	3
Test Committee	3
Future Conferences	3
Information For the Work Place	4



American Board of Vocational Experts

Board of Directors

President

Harold Kulman, MA
Marietta, PA
<mailto:hvkb@comcast.net>
<mailto:pres@abve.net>

President-Elect

Donald Jennings, EdD
Feasterville, PA
<mailto:Djenn826@aol.com>
<mailto:preselect@abve.net>

Treasurer

Bart Hultine, EdD
Hastings, NE
<mailto:bart@inebraska.com>
<mailto:treas@abve.net>

Secretary

Cynthia Grimley, MS
Lexington, SC
<mailto:secty@abve.net>
<mailto:cpgrimley@aol.com>

Immediate Past President

Richard J. Baine, MA
Blue Bell, PA
<mailto:rjbainevoexpert@earthlink.net>

Board

Bruce Growick, PhD
Columbus, OH
<mailto:growick.1@osu.edu>
<mailto:pubs@abve.net>

Jeffrey Lucas, PhD
Palatine, IL
<mailto:ermjeff@email.com>

Stephanie Sleister, PhD
Bartonville, IL
<mailto:sleister@ntslink.net>

Ellen Nagourmey, MS
Mica, WA
<mailto:elnago@ace-computers.com>

THE VOCATIONAL EXPERT

Editor

Cynthia P. Grimley, MS
Lexington, SC
<mailto:cpgrimley@aol.com>

STAFF

Executive Director

Glenn Zimmermann
<mailto:glenn@btfenterprises.com>

Account Administrator

Renee Jankord
<mailto:renee@btfenterprises.com>

National Office

3540 Soquel Drive, Suite A
Santa Cruz, CA 95062
Phone: (831) 464-4890
FAX: (831) 576-1417
<http://www.abve.net>

President's Message

By Harold Kulman, ABVE President, 2003–2005



First of all, before I talk about my thoughts concerning ABVE's future, I would like to thank Past President Dick Baine for his constant support, helping me get back into the rhythm of the ABVE administration. He is certainly a worthy addition to the list of Past Presidents of ABVE.

Almost 20 years ago, I was your President for one year and here I am again, this time for two years rather than one. A great deal has been accomplished since I was last President regarding our professional advancement. Although there is

much more to be done and changes to be made, I still believe strongly in the basic requirements to become a member of ABVE. A peer review of work product and educational achievement is essential, and also a review of work experience and references, along with passing a qualification examination. As long as these basic foundational criteria remain in place, we can move on and so we have done just that.

Our qualification examination has been around for a long time and it needs work, not to be redesigned, but to be revised with more appropriate questions. Our test committee is presently working on this.

The ethics committee has rewritten our ethics code and it is ready for review and finalization.

Attracting new membership remains a constant challenge, which we must continue to address. We need additional members; however, only those who meet our standards for membership should be considered. The Board does not plan to dilute our basic entrance criteria just to gain new members. There are plenty of qualified individuals out there who want to be ABVE members. All we have to do is show them the value of ABVE and this should be a good reason to join us.

Our journal has given us professional recognition and is based in a highly respected university setting. Our newsletter is published periodically and is a great enhancement to our communication with all ABVE members. In addition, a monograph is about to be published by two of our distinguished ABVE members.

Further down the road is the development of a distance learning program and the revision of our Website. We have a lot to do and our Board is very active in getting all this work done. What we need most is your participation. I've asked each board member to find 3-5 non-board members to help on our committees this year. Your support would be greatly appreciated. If you feel you can contribute, don't hesitate to ask the committee chair to be included. Let's see what we can do to get our work done and make ABVE the most professional and respected vocational organization in our country.

Welcome to the Following New Members

Congratulations to the following new members, who have applied for membership, upgraded their status or reinstated their membership. Welcome to all!

Marlis Bruns, Associate

Brenda Dailey, Associate

John Velton, Associate

Ron Fleck, Fellow

O.R. Elofson, Diplomat

Barney Frieberg-Dale, Diplomat

Trudy Koslow, Diplomat

Thomas Weiford, Diplomat

Letter From the Editor

Cynthia Grimley, MS
Newsletter, Editor

Dear Members:

Just a reminder that most of you are now receiving your newsletter via email and it is very important that you keep BTF updated of any email address changes.

You will need Adobe Acrobat reader to view the PDF format. The feedback of this format continues to be favorable. If you have any problems receiving your newsletter electronically please let BTF know immediately. Those members who do not have email will still continue to receive their newsletter by mail.

I continue to look for members to assist me on a committee for the newsletter. I would like to see members contribute items such as book reviews, or any other areas that may be of interest to our forensic community. If a committee could be formed to assist with the contribution of such items then these can be distributed via email on a monthly basis, in between the regular newsletter publications.

Please contact me if you are interested in serving on the newsletter committee. I can be reached at 803-765-1513 or CPGRIMLEY@AOL.COM.

The American Board of Vocational Experts, never has and currently does not endorse the use of any specific tests, test batteries, or commercial products.

Spring 2003

Test Maintenance Committee

Stephanie Sleister, Chair

The Test Committee consists of the following individuals: Stephanie Sleister, Jeff Lucas, Ellen Nagourney and Billy McCroskey. We accomplished a great deal when we met in San Diego. We realized that we need to develop new test questions but there is work to be done before this. Once the applicant's tests are scored the results of the tests are given to Dr. McCroskey since he is working on the re-standardization of the test.

The present test questions all came from Mayer, L (2000). "Annotated bibliography of topics in forensic vocational knowledge and applications related to the 1998 3rd Edition ABVE Examination." *Journal of Forensic Vocational Analysis*, Volume 3, Number 1. It was determined it would be helpful if this could be put on the ABVE web-site for reference. The goal is to accomplish this by July 2003.

In order to modernize future test questions, all speakers scheduled for conferences, beginning with the St. Thomas Conference, will be asked to submit five questions, with references. This will help the committee in the development of new content area with topics that are current in our field.

The Knowledge Enhancement Seminar will be renamed "Test Preparation Seminar." Dr. McCroskey has agreed to standardize this seminar, and put the materials on a CD that can be purchased from ABVE. This will enable anyone teaching the seminar to teach standardized material that is on the examination. In order to enable Dr. McCroskey with this task, the committee will compile test questions from previous conference speakers and handouts. It is hoped this new seminar format can be completed by the October conference.

This is a lot to do, but I am very excited about the future product of this examination.



**MARK YOUR
CALENDARS NOW!!!**

**FUTURE CONFERENCE SITE
LOCATIONS**

**Spring 2004
Atlanta, GA**

**Fall 2004
Anaheim/Newport
Beach, CA**

**Spring 2005
Cancun, Mexico**

**Fall 2005
San Francisco, CA**



Information For the Work Place

NOTE: This has been submitted compliments of Myles Levin, MDEX ONLINE, INC. The information below is reprinted with permission. It is taken from *The Gatekeeper Quarterly, Vol. 1, Issue 2*, a publication of the Daubert Tracker. The following is a list of the most 100 challenged disciplines.

The **Daubert Tracker** believes that it is generally instructive to analyze statistics associated with patterns of challenges to the testimony of experts in *Daubert* hearings. Below you will find a list of the disciplines most often challenged since the Supreme Court decided the case in 1993.

The list is derived from cases in the LEXIS database that cite or mention *Daubert, Kumho* or *Joiner*- over 4,200 cases and some 6,000 experts. The list does not include disciplines/ experts from other 'gatekeeping' cases in the database, such as the *Frye* and seminal state cases that the product tracks.

1. Medicine (2,312)
2. Engineering (856)
3. Psychology (412)
4. Forensic Science (354)
5. Economics (264)
6. DNA (260)
7. Biology (238)
8. Chemistry (229)
9. Toxicology (211)
10. Police/Law Enf. Officer (177)
11. Accident Recon./Invest (159)
12. Genetics (144)
13. Government Agent (143)
14. Accounting (129)
15. Law (103)
16. Statistics (99)
17. Epidemiology (98)
18. Pharmacology (94)
19. Polygraphy (94)
20. Safety (80)
21. Fire Investigation (77)
22. Field Sobriety Testing (72)
23. Erg./Human Fac. Anlys. (67)
24. Real Estate (63)
25. Criminology (57)
26. Fingerprint Analysis (52)
27. Finance (47)
28. Eyewitness Identification (45)
29. Business Valuation (44)
30. Admiralty/Marine (Unspec.) (43)
31. Industrial Hygiene (38)
32. Osteopathy (38)
33. Vocational Expert (38)
34. Warnings Expert (36)
35. Env. Science/Tech. (NEC) (34)
36. Insurance Expert (33)
37. Firearms/Toolmrks/Ballist. (32)
38. Physics (31)
39. Seatbelt Design (31)
40. Geology (30)
41. Handwriting Analysis (28)
42. Marketing (28)
43. Physiology (28)
44. Business Administration (27)
45. Sociology (27)
46. Dentistry (26)
47. Serology (26)
48. Veterinary Medicine (26)
49. Social Work (25)
50. Couns./Therapy (NEC) (23)
51. Forensic Doc. Examin. (23)
52. Public Health (NEC) (23)
53. Agency/Assoc. Admin (22)
54. Tire Expert (22)
55. Biomechanics (NEC) (21)
56. Pathology (NEC) (21)
57. Aviation (20)
58. Construction (20)
59. Market Research (19)
60. Hair Analysis (18)
61. Security (18)
62. Nursing (17)
63. Computer Science (16)
64. Human Res./Labor Rel. (16)
65. Mathematics (16)
66. Banking (15)
67. Crime Scene Rec/Invest (15)
68. Mechanical Trades (14)
69. Architecture (13)
70. Education (13)
71. Lang./Linguist. Expert (13)
72. Hydrology (12)
73. Valuation (NEC) (11)
74. Anthropology (10)
75. Bite-mark Expert (10)
76. FDA Expert (10)
77. Ecology (9)
78. Railroad Expert (9)
79. Agriculture (8)
80. Athletics (8)
81. Electrician (8)
82. Electronics (8)
83. Blood Spatter Analysis (7)
84. Chiropractics (7)
85. Coroner/Med. Ex. (NEC) (7)
86. Demography (7)
87. Immunoscience (non-MD) (7)
88. Life Care Planning (7)
89. Management (NEC) (7)
90. Medical Technology (7)
91. Securities Expert (7)
92. Machining (6)
93. Optometry (6)
94. Suicidology (6)
95. Surveying (6)
96. Anatomy (5)
97. Art (5)
98. Driving (5)
99. Engineering Technology (5)
100. Fraud Examination (5)

In Loving Memory

By Cynthia P. Grimley

It is with a sadden heart as I write this to inform you that Janet Hutchison, Publication Coordinator at BTF Enterprises passed away on April 10, 2003 while on vacation in Hawaii. Janet was diagnosed with Pancreatic cancer with a prognosis of six months to live. She lived for 1 ½ years battling the disease. Janet always had the most upbeat attitude and outlook on life which leaves no doubt in my mind that this is how she "hung on" so long with this type of cancer. For the last four years Janet assisted with our newsletter giving it the special and final touch that you all would experience. Our deepest sympathy is extended to Janet's family and friends.